

# Brondell®

## Circle Reverse Osmosis Under Sink Water Filtration System White Paper Marketing Claims

**Model:** RC-100

November 2023

# Contents

<b>Section</b>	<b>Page</b>
<b>1 “10X More Efficient” Claim</b>	
1.1 Table Data Explanation	2
1.2 Brondell Circle RC100 vs. Premier RO-Pure Plus	3
1.3 Brondell Circle RC100 vs. GE PXRQ15RBL	5
<b>2 “Saves You Money” Claim</b>	
2.11 Premier RO-Pure Plus vs. Brondell Circle RC100	7
2.2 GE PXRQ15RBL vs. Brondell Circle RC100	8
2.3 Competition vs. Brondell Summary	9
<b>3 Raw Claim Data</b>	
3.11 Complete “10X More Efficient” RO System Test Data Tables	10 13
3.2 Complete “Saves You Money” Source Citations	

## 1.1 Table Data Explanation

### Models Tested



Brondell  
Circle RC100



Premier  
RO-Pure Plus



GE  
PXRQ15RBL

The shaded areas on the tables on the following pages represent a volume of 24 ounces of water – the equivalent of 2 “standard” glasses of water. In real life, users of RO systems do not drink an entire tank of water all at once, but instead dispense water from the tank by drinking a glass or two at a time. The system then refills that 24 ounces to return to a full tank. This is referred to as “topping off”.

With conventional RO systems, back pressure builds up in the system as the tank is filled with water and the air in the tank is displaced. Because of this build up in back pressure, the RO membrane creates a tremendous amount of wastewater as it tries to push through the greater amount of back pressure from the displaced air from the nearly full tank. This is why conventional RO systems are at their most inefficient during this “topping off” stage.

Pages 3-6 show a comparison that represents the average wastewater output for each product as it replaces the subtracted 24 ounces of filtered water to return to the tank’s full capacity. This is referred to as the “Top Off Efficiency Average”.

Our marketing materials make statements both with a qualifier (“Up to 10X...”) and without a qualifier (“10X More Efficient...”). As illustrated by the data found on pages 3-6, both claims are substantiated.

## 1.2 Brondell Circle RC100 vs. Premier RO-Pure Plus

### Top Efficiency Average

Circle RC100 Average	2.4 Liters
RO-Pure Plus Average	20 Liters
Circle RC100 Efficiency	8.3 X

**NOTE:** The yellow highlighted figures support Brondell’s “10X Efficiency” claim. At the same occupied Volume, RO-Pure Plus wastewater output is **10.14 times** as much water as Circle RC100.

#### Brondell Circle RC100

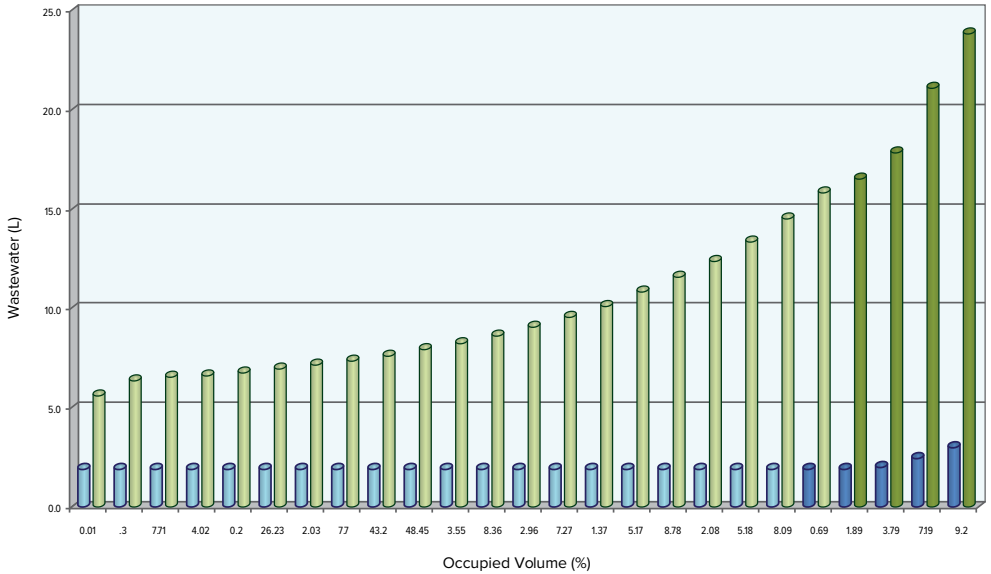
OCCUPIED VOLUME (%)	WASTE WATER/ 1 LITER OF PURIFIED WATER (L)
0.0	2.1
1.9	2.1
5.7	2.1
9.5	2.1
13.3	2.1
17.1	2.1
21.0	2.1
24.8	2.1
28.6	2.1
32.4	2.1
36.2	2.1
40.0	2.1
43.8	2.1
49.5	2.1
55.2	2.1
61.0	2.1
66.7	2.1
72.4	2.1
78.1	2.1
83.8	2.1
91.4	2.1
95.2	2.1
97.1	2.1
98.9	2.6
99.4	3.1

#### Premier RO-Pure Plus

OCCUPIED VOLUME (%)	WASTE WATER/ 1 LITER OF PURIFIED WATER (L)
0.0	5.7
1.3	6.5
7.7	6.6
14.0	6.8
20.	6.9
26.2	7.1
32.0	7.3
37.7	7.5
43.2	7.8
48.4	8.1
53.5	8.4
58.3	8.8
62.9	9.2
67.2	9.7
71.3	10.3
75.1	10.9
78.7	11.7
82.0	12.6
85.1	13.5
88.0	14.7
90.6	16.0
91.8	16.7
93.7	18.0
97.1	21.3
99.2	24.0

“10X MORE EFFICIENT” CLAIM

## 1.2 Brondell Circle RC100 vs. Premier RO-Pure Plus



# 1.3 BRONDELL CIRCLE RC100 VS. GE PXRQ15RBL

## Top Efficiency Average

Circle RC100 Average	2.4 Liters
RO-Pure Plus Average	20 Liters
Circle RC100 Efficiency	8.3 X

**NOTE:** The yellow highlighted figures indirectly support Brondell’s “10X Efficiency” claim. Though a reading for PXRQ15RBL was not registered at an Occupied Volume of 97.1% (thus making a direct comparison with Circle RC100), one can extrapolate the data to estimate what the reading would have been at the 97.1% volume, and it would be above the 10X claim threshold.

### Brondell Circle RC100

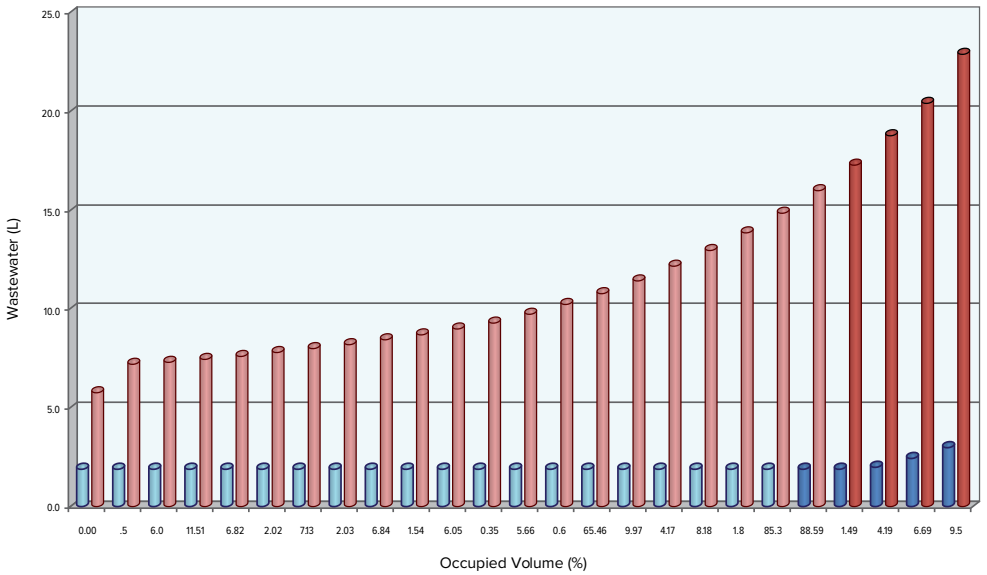
OCCUPIED VOLUME (%)	WASTE WATER/ 1 LITER OF PURIFIED WATER (L)
0.0	2.1
1.9	2.1
5.7	2.1
9.5	2.1
13.3	2.1
17.1	2.1
21.0	2.1
24.8	2.1
28.6	2.1
32.4	2.1
36.2	2.1
40.0	2.1
43.8	2.1
49.5	2.1
55.2	2.1
61.0	2.1
66.7	2.1
72.4	2.1
78.1	2.1
83.8	2.1
91.4	2.1
95.2	2.1
97.1	2.1
98.9	2.6
99.4	3.1

### Premier RO-Pure Plus

OCCUPIED VOLUME (%)	WASTE WATER/ 1 LITER OF PURIFIED WATER (L)
0.0	5.9
0.5	7.4
6.0	7.5
11.5	7.6
16.8	7.8
22.0	8.0
27.1	8.1
32.0	8.4
36.8	8.6
41.5	8.8
46.0	9.1
50.3	9.4
55.6	9.9
60.6	10.4
65.4	10.9
69.9	11.6
74.1	12.3
78.1	13.1
81.8	14.0
85.3	15.0
88.5	16.1
91.4	17.4
94.1	18.9
96.6	20.5
99.5	23.0

"10X MORE EFFICIENT" CLAIM

### 1.3 BRONDELL CIRCLE RC100 VS. GE PXRQ15RBL



## 2.1 PREMIER RO-PURE PLUS VS. BRONDELL CIRCLE RC100

### Premier RO-Pure Plus vs. Brondell Circle RC100 Cost of Ownership Analysis

#### Water Cost Data

Average drinking/cooking water use per capita per day <sup>1</sup>	2 gallons
Average family size in household <sup>2</sup>	3.13 people
Average drinking/cooking water use per family	2,284.9 gallons/year
Average cost of water <sup>3</sup>	0.0045 per gallon

#### Premier RO-Pure Plus

Average drinking/cooking water use per family	2,284.9 gallons/year
“Top Off Method” ratio of filtered water to wastewater	20.0 gal. waste/gal. filtered
Wastewater, using “Top Off Method”	45,698 gallons/year
Total cost of wastewater	\$206.93 per year

<b>Total cost of wastewater</b>	<b>\$17.24 per month</b>
---------------------------------	--------------------------

#### Brondell Circle RC100

Average drinking/cooking water use per family	2,284.900 gallons/year
“Top Off Method” ratio of filtered water to wastewater	2.4 gal. waste/gal. filtered
Wastewater, using “Top Off Method”	5,483.76 gallons/year
Total cost of wastewater	\$24.83 per year

<b>Total cost of wastewater</b>	<b>\$2.07 per month</b>
---------------------------------	-------------------------

#### Summary

Cost of monthly drinking/cooking water with Premier RO-Pure Plus	\$17.24 per month
Cost of monthly drinking/cooking water with Brondell Circle RC100	\$2.07 per month
<b>Cost difference of monthly drinking/cooking water</b>	<b>\$15.18 more per month</b>
<b>Wastewater consumed, using “Top Off Method”</b>	<b>3,351 more gallons per month with RO-Pure Plus</b>
Cost of Brondell Circle RC100 (retail price on brondell.com) <sup>4</sup>	\$429.00
Cost of Premier RO-Pure Plus (retail price on geapplianceparts.com) <sup>4</sup>	\$199.95
Cost difference	\$229.05 more initial cost with Circle
<b>Time to make up cost of Circle RC100</b>	<b>28.27 months</b>
<b>Time to make up cost difference between Circle RC100 and RO-Pure Plus</b>	<b>15.09 months</b>

Footnotes 1-4: Please see Page 13 for calculation details.



## 2.1 GE PXRQ15RBL VS. BRONDELL CIRCLE RC100

### GE PXRQ15RBL vs. Brondell Circle RC100 Cost of Ownership Analysis

#### Water Cost Data

Average drinking/cooking water use per capita per day <sup>1</sup>	2 gallons
Average family size in household <sup>2</sup>	3.13 people
Average drinking/cooking water use per family	2,284.9 gallons/year
Average cost of water <sup>3</sup>	0.0045 per gallon

#### GE PXRQ15RBL

Average drinking/cooking water use per family	2,284.9 gallons/year
“Top Off Method” ratio of filtered water to wastewater	20.0 gal. waste/gal. filtered
Wastewater, using “Top Off Method”	45,698 gallons/year
Total cost of wastewater	\$206.93 per year
<b>Total cost of wastewater</b>	<b>\$17.24 per month</b>

#### Brondell Circle RC100

Average drinking/cooking water use per family	2,284.900 gallons/year
“Top Off Method” ratio of filtered water to wastewater	2.4 gal. waste/gal. filtered
Wastewater, using “Top Off Method”	5,483.76 gallons/year
Total cost of wastewater	\$24.83 per year
<b>Total cost of wastewater</b>	<b>\$2.07 per month</b>

#### Summary

Cost of monthly drinking/cooking water with GE PXRQ15RBL	\$17.24 per month
Cost of monthly drinking/cooking water with Brondell Circle RC100	\$2.07 per month
<b>Cost difference of monthly drinking/cooking water</b>	<b>\$15.18 more per month</b>
<b>Wastewater consumed, using “Top Off Method”</b>	<b>3,351 more gallons per month</b>
	<b>with PXRQ15RBL</b>
	<b>with PXRQ15RBL</b>
Cost of Brondell Circle RC100 (retail price on brondell.com) <sup>4</sup>	\$429.00
Cost of PXRQ15RBL (retail price on geapplianceparts.com) <sup>4</sup>	\$279.99
Cost difference	\$149.01 more initial cost with Circle
<b>Time to make up cost of Circle RC100</b>	<b>28.27 months</b>
<b>Time to make up cost difference between Circle RC100 and PXRQ15RBL</b>	<b>9.82 months</b>

Footnotes 1-4: Please see Page 13 for calculation details.

## 2.3 BRONDELL CIRCLE RC100 VS. COMPETITION SUMMARY

As illustrated in the data on the previous two pages, savings in the cost of drinking water is just over \$15 per month in favor of the Circle RC100 versus the Premier RO-Pure Plus model and versus the GE PXRQ15RBL (coincidentally the “Top Off Method” ratio value is the same for both of the competing models).

**As an example, over a 10-year period, your Circle could save you \$1,821.60 on the cost of water.**

According to a study from Circle of Blue\*, municipal water costs have increased 41% since 2010, as cities are forced to spend millions of dollars to update water supply networks. “Some assessments peg the national cost of repairing and replacing old pipes at more than \$US 1 trillion over the next two decades.” In other words, that \$15 savings per month is likely to grow more and more.

In addition to saving money, using the Circle RC100 system saves water – lots of it. 3,300 gallons of water

**As an example, over a 10-year period, your Circle could save 402,120 gallons of water.** That’s enough to provide drinking and cooking water to 176 families for an entire year.\*\*

\* <http://www.circleofblue.org/waternews/2015/world/price-of-water-2015-up-6-percent-in-30-major-u-s-cities-41-percent-rise-since-2010/>

\*\* see data on page 8

**3.1 COMPLETE “10X MORE EFFICIENT” RO SYSTEM TEST DATA TABLES**

**MANUFACTURER:** Premier **MODEL:** RO-Pure Plus

Tested by the Environmental Technology Institute, a WQA-certified lab in Seoul, Korea on April 29, 2015

TIME (mins.)	ACCUMULATED PERMANENT VOLUME (L)	BACK PRESSURE (PSI)	TDS REDUCTION (%)	OCCUPIED VOLUME (%)	WASTE WATER/ 1 LITER OF PURIFIED WATER (L)
0	0.0	0.0	92.8	0.0	5.7
1	0.1	5.7	92.3	1.3	6.5
7	0.7	6.4	92.2	7.7	6.6
13	1.3	7.1	92.0	14.0	6.8
19	1.8	7.9	91.8	20.2	6.9
25	2.4	8.8	91.6	26.2	7.1
31	2.9	9.7	91.4	32.0	7.3
37	3.4	10.7	91.1	37.7	7.5
43	3.9	11.7	90.8	43.2	7.8
49	4.4	12.8	90.4	48.4	8.1
55	4.8	14.0	90.0	53.5	8.4
61	5.2	15.2	89.5	58.3	8.8
67	5.7	16.5	89.0	62.9	9.2
73	6.0	17.7	88.4	67.2	9.7
79	6.4	19.0	87.7	71.3	10.3
85	6.8	20.3	87.0	75.1	10.9
91	7.1	21.6	86.2	78.7	11.7
97	7.4	22.9	85.2	82.0	12.6
103	7.7	24.1	84.2	85.1	13.5
109	7.9	25.3	83.0	88.0	14.7
115	8.2	26.5	81.7	90.6	16.0
118	8.3	27.0	81.0	91.8	16.7
123	8.4	27.9	79.7	93.7	18.0
133	8.7	29.6	76.7	97.31	21.3
140	8.9	30.7	74.4	99.2	24.0

Rated pressure into RO system: 48psi

Data used in “10X” comparisons on pages 3-4

**3.1 COMPLETE “10X MORE EFFICIENT” RO SYSTEM TEST DATA TABLES**

**MANUFACTURER:** GE MODEL: PXRQ15RBL

Tested by the Environmental Technology Institute, a WQA-certified lab in Seoul, Korea on April 29, 2015

TIME (mins.)	ACCUMULATED PERMANENT VOLUME (L)	BACK PRESSURE (PSI)	TDS REDUCTION (%)	OCCUPIED VOLUME (%)	WASTE WATER/ 1 LITER OF PURIFIED WATER (L)
0	0.0	8.4	94.8	0.0	5.9
1	0.0	8.5	94.0	0.5	7.4
16	0.5	9.1	93.9	6.0	7.5
31	1.0	9.8	93.7	11.5	7.6
46	1.5	10.5	93.6	16.8	7.8
61	1.9	11.2	93.4	22.0	8.0
76	2.4	11.9	93.3	27.1	8.1
91	2.8	12.7	93.1	32.0	8.4
106	3.2	13.5	92.9	36.8	8.6
121	3.6	14.3	92.6	41.5	8.8
136	4.0	15.2	92.4	46.0	9.1
151	4.4	16.0	92.1	50.3	9.4
170	4.9	17.1	91.8	55.6	9.9
189	5.3	18.3	91.3	60.6	10.4
208	5.8	19.4	90.9	65.4	10.9
227	6.2	20.5	90.3	69.9	11.6
246	6.5	21.7	89.8	74.1	12.3
265	6.9	22.8	89.1	78.1	13.1
284	7.2	23.9	88.4	81.8	14.0
303	7.5	25.0	87.6	85.3	15.0
322	7.8	26.0	86.7	88.5	16.1
341	8.0	27.0	85.7	91.4	17.4
360	8.3	27.9	84.7	94.1	18.9
379	8.5	28.8	83.5	96.6	20.5
403	8.8	29.9	81.8	99.5	23.0

Rated pressure into RO system: 48psi

Data used in “10X” comparisons on pages 5-6

RAW CLAIM DATA

**3.1 COMPLETE “10X MORE EFFICIENT” RO SYSTEM TEST DATA TABLES**

**MANUFACTURER:** Brondell **MODEL:** Circle RC100

Tested by the Environmental Technology Institute, a WQA-certified lab in Seoul, Korea on April 29, 2015

TIME (mins.)	ACCUMULATED PERMANENT VOLUME (L)	BACK PRESSURE (PSI)	TDS REDUCTION (%)	OCCUPIED VOLUME (%)	WASTE WATER/ 1 LITER OF PURIFIED WATER (L)
0	0.0	0.0	95.9	0.0	2.1
1	0.1	0.0	95.9	1.9	2.1
3	0.4	0.0	95.9	5.7	2.1
5	0.6	0.0	95.9	9.5	2.1
7	0.8	0.0	95.9	13.3	2.1
9	1.1	0.0	95.9	17.1	2.1
11	1.3	0.0	95.9	21.0	2.1
13	1.6	0.0	95.9	24.8	2.1
15	1.8	0.0	95.9	28.6	2.1
17	2.0	0.0	95.9	32.4	2.1
19	2.3	0.0	95.9	36.2	2.1
21	2.5	0.0	95.9	40.0	2.1
23	2.8	0.0	95.9	43.8	2.1
26	3.1	0.0	95.9	49.5	2.1
29	3.5	0.0	95.9	55.2	2.1
32	3.8	0.0	95.9	61.0	2.1
35	4.2	0.0	95.9	66.7	2.1
38	4.6	0.0	95.9	72.4	2.1
41	4.9	0.0	95.9	78.1	2.1
44	5.3	0.0	95.9	83.8	2.1
48	5.8	0.0	95.9	91.4	2.1
50	6.0	0.6	95.9	95.2	2.1
51	6.1	2.8	95.7	97.1	2.1
52	6.2	13.1	94.2	98.9	2.6
52.4	6.3	20.1	92.4	99.4	3.1

Rated pressure into RO system: 48psi

Data used in “10X” comparisons on pages 3-6

**3.2 “SAVES YOU MONEY” SOURCE CITATIONS**

Average drinking/cooking water use per capita per day <sup>1</sup>	2 gallons
Average family size in household <sup>2</sup>	3.13 people
Average drinking/cooking water use per family	2,284.9 gallons/year
<b>Average cost of water<sup>3</sup></b>	<b>0.0045 per gallon</b>

1 United States EPA Document, “Water on Tap”, December 2009: [http://water.epa.gov/drink/guide/upload/book\\_waterontap\\_full.pdf](http://water.epa.gov/drink/guide/upload/book_waterontap_full.pdf)

2 Statista: <http://www.statista.com/statistics/183657/average-size-of-a-family-in-the-us/>

3 Circle of Blue, “The Price of Water 2013”, June 2013: [http://www.circleofblue.org/waternews/wp-content/uploads/2013/06/2013\\_finaltables.jpg](http://www.circleofblue.org/waternews/wp-content/uploads/2013/06/2013_finaltables.jpg) (see below)

**Circle of Blue 2013 Survey Breakdown**

Seattle	\$90.36 per month	Dallas	\$42.62 per month
San Francisco	\$87.20 per month	Houston	\$58.28 per month
San Jose	\$52.26 per month	Memphis	\$23.58 per month
Fresno	\$19.75 per month	Chicago	\$34.68 per month
Los Angeles	\$66.35 per month	Milwaukee	\$33.64 per month
San Diego	\$80.83 per month	Indianapolis	\$53.04 per month
Las Vegas	\$41.13 per month	Detroit	\$37.02 per month
Phoenix	\$38.75 per month	Columbus	\$52.00 per month
Tucson	\$46.45 per month	Atlanta	\$91.92 per month
Salt Lake City	\$26.13 per month	Jacksonville	\$43.30 per month
Denver	\$30.00 per month	Charlotte	\$48.43 per month
Santa Fe	\$153.78 per month	Baltimore	\$51.15 per month
Austin	\$72.19 per month	Philadelphia	\$62.70 per month
San Antonio	\$41.20 per month	New York	\$54.24 per month
Ft. Worth	\$45.66 per month	Boston	\$74.18 per month
	<b>Average Water Bill</b>		<b>\$55.09 per month</b>
			<b>\$661.13 per year</b>
	<b>Average Cost of Water</b>		<b>\$0.0045 per gallon</b>

## ABOUT

### **ABOUT BRONDELL**

With 20 years in the industry, Brondell is known for developing products that provide welcome relief, long-term health benefits, and a more sustainable footprint for healthier spaces and routines. The company focuses on customer wellness, harnessing cutting-edge technology to improve health within the home, office, commercial spaces, and beyond. Product development includes rigorous, independent laboratory testing, thoughtful designs, third-party certifications, and the leverage of smart technology for a reduction in airborne particulates, waterborne contaminants, and wasteful toilet paper usage. Each product in Brondell's ecosystem of solutions is crafted to fit seamlessly and sustainably into everyday life, so that things we do every day—like breathing, drinking, bathing, and flushing—are better for both people and the planet.

Brondell is a Mark Cuban-backed company with a retail presence in 4,500+ stores throughout North America, including The Home Depot, Lowe's, Costco, and Walmart.

Past awards include Kitchen & Bath Industry Show (KBIS) Best of KBIS Kitchen Silver Award, Electronic House Home Health Technology Product of the Year, Good Housekeeping VIP Award, Home Magazine Best American Building Products Award, and Wired Tools Top 100 Cool Gadgets.

# Brondell®

Feels better already.

Brondell, Inc.  
PO Box 470085  
San Francisco, CA  
94147-0085

[www.brondell.com](http://www.brondell.com)

**For Questions, Contact:**

Brondell Customer Service: 1-888-542-3355  
Monday–Friday, 8 a.m.–2 p.m. PT

**Marketing Contact**

Geoff Dunlop  
Marketing Director  
[geoffrey.dunlop@brondell.com](mailto:geoffrey.dunlop@brondell.com)



**Brondell**

Feels better already.

#23RC100\_WF\_1120